

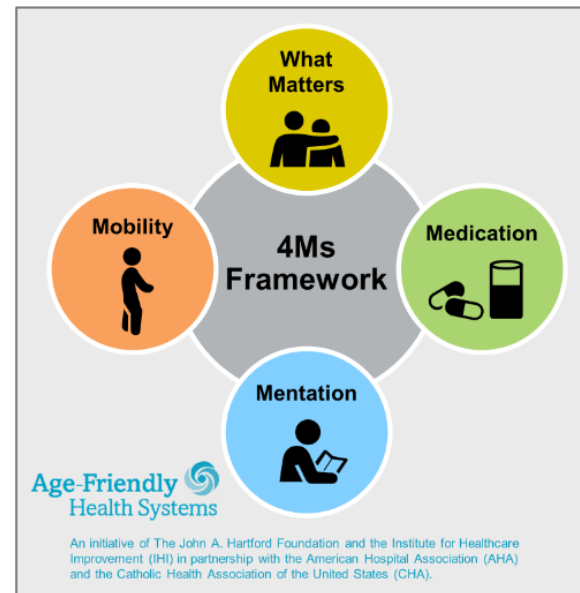
# *Socialization and Activities affect Quality of Life and Quality of Care*

Be Active, Stay Active to have  
quality of life

# Person-Centered Care

## *A Movement: A Philosophy of Care*

Create health care systems that ensure every older adult receives the best evidence-based care possible, without harm, ultimately satisfied with the care received.



For related work, this graphic may be used in its entirety without requesting permission. Graphic files and guidance at [ihi.org/AgeFriendly](http://ihi.org/AgeFriendly)

### **What Matters**

Know and align care with each older adult's specific health outcome goals and care preferences including, but not limited to, end-of-life care, and across settings of care.

### **Medication**

If medication is necessary, use Age-Friendly medication that does not interfere with What Matters to the older adult, Mobility, or Mentation across settings of care.

### **Mentation**

Prevent, identify, treat, and manage dementia, depression, and delirium across settings of care.

### **Mobility**

Ensure that older adults move safely every day in order to maintain function and do What Matters.

**"We're past just trying to fill time,"  
says Natalie Davis, CEO and co-founder  
of United States of Care,  
a Washington, D.C.-based  
health care advocacy organization.  
"We want to enrich their lives."**

## Music Enriches Lives



# The Power of Music

## Enrichment Activities

- ☐ Celebrity chef night- a well-known local
- ☐ Virtual Reality- Travel and visit a unique place
- ☐ Bubble Machines, Fiber Optic light tubes
- ☐ Karaoke Night
- ☐ Local Artist or Musician
- ☐ Tour of the Town or Countryside
- ☐ Knitting booties or making 'Mother's Day' cards for the new moms in the local hospital.
- ☐ Art therapy
- ☐ Name that tune
- ☐ Google Earth
- ☐ My Reef 3D [Reef Video](#)
- ☐ Gardening App- Flower Garden
- ☐ Luminosity- Brain Game App
- ☐ Group Wordal
- ☐ Comedy Skits
- ☐ Halloween Sensory Guessing Game
- ☐ Calming Flower Garden Tour: <https://www.youtube.com/watch?v=A6rRn9jN-bw>

## PIP- Life Enrichment Interventions

### PIP Team Members:

Staff Name	Title		
	ADM		
	Activities Coordinator		
	DON		

### PIP Team Project:

Quality Measure of Focus	Baseline Rate of QM	Improvement Goal for QM	Goal Rate	Date to reach the goal rate
Life Enrichment		State Rate		02/28/2025

### Goal Monitoring:

Current Date	Current Rate	Current Date	Current Rate	Current Date	Current Rate
11/01/2024	30%	11/01/2024	30%		
12/15/2024	50%				
01/31/2024	75%				

### Interventions: The following are the interventions Implemented:

Start Date	Intervention Description	Intervention Notes	Outcome/Results
11/01/2024	Survey Residents for Activities of Interest Rate their top 5	Multidisciplinary Team (include Activity Coordinator)	
12/15/2024	Identify activities, identify involvement goals	Run CASPER Quality Measures Report – Monitor Improvement  Talk with team about what they have learned from surveying residents about activities	
01/18/2025	Individual Care Plans		
01/18/2025	Identify What Matters Most to each Resident		

**Outcomes:** Use the table below to document what has worked, what has not worked, or lessons learned.

Intervention Successes	Intervention Barriers	Lessons learned



# Making a Quality Difference

Measure Description	CMS ID	Data	Num	Denom	Facility Observed Percent	Facility Adjusted Percent	Comparison Group State Average	Comparison Group National Average	Comparison Group National Percentile
Hi-risk/Unstageable Pres Ulcer (L)	N015.03	C	2	20	10.0%	10.0%	10.0%	9.1%	62
Phys restraints (L)	N027.02	C	0	45	0.0%	0.0%	0.3%	0.2%	0
Falls (L)	N032.02	C	26	45	57.8%	57.8%	52.1%	46.3%	78 *
Falls w/Maj Injury (L)	N013.02	C	1	45	2.2%	2.2%	4.8%	3.6%	37
Antipsych Med (S)	N011.02	C	2	8	25.0%	25.0%	2.8%	2.2%	99 *
Antipsych Med (L)	N031.03	C	1	37	2.7%	2.7%	15.0%	14.4%	7
Antianxiety/Hypnotic Prev (L)	N033.02	C	1	18	5.6%	5.6%	8.4%	6.3%	57
Antianxiety/Hypnotic % (L)	N036.02	C	11	34	32.4%	32.4%	24.3%	19.7%	88 *
Behav Sx affect Others (L)	N034.02	C	8	41	19.5%	19.5%	17.2%	20.6%	56
Depress Sx (L)	N030.02	C	2	41	4.9%	4.9%	4.8%	7.5%	65
UTI (L)	N024.02	C	0	27	0.0%	0.0%	3.7%	2.8%	0
Cath Insert/Left Bladder (L)	N026.03	C	1	27	3.7%	2.9%	2.6%	2.1%	74
Lo-Risk Lose B/B Con (L)	N025.02	C	4	8	50.0%	50.0%	38.1%	47.3%	58
Excess Wt Loss (L)	N029.02	C	4	17	23.5%	23.5%	6.0%	8.5%	97 *
Incr ADL Help (L)	N028.02	C	9	31	29.0%	29.0%	16.2%	17.2%	89 *
Move Indep Worsens (L)	N035.03	C	1	5	20.0%	26.5%	21.0%	27.2%	52
Improvement in Function (S)	N037.03	C	1	4	25.0%	29.6%	69.4%	70.8%	4 *

Measure Description	CMS ID	Numerator	Denominator	Facility Observed Percent	Facility Adjusted Percent	National Average
Pressure Ulcer/Injury <sup>1</sup>	S038.02	4	46	8.7%	10.3%	2.9%

<sup>1</sup> The Changes in Skin Integrity Post-Acute Care: Pressure Ulcer/Injury (S038.02) measure is calculated using the SNF QRP measure specifications v3.0 addendum and is based on 12 months of data (01/01/2020 - 12/31/2020).

Engagement, involvement and [connection](#) with others are key, as is meaningfulness.



Halloween Parties





## Halloween Activities

- <https://www.tiktok.com/@thecanopyatazealegrove/video/7156989702007065902?lang=en>
- <https://www.tiktok.com/@tlclivingcommunity/video/7296846630257544491>
- <https://www.tiktok.com/@hillsidemedicallodge/video/7295427660535139615>
- <https://www.facebook.com/VT/videos/the-most-wholesome-nursing-home-games/3264654287124377/>



# *A Case to Consider- Moments of Momentum*

- Activity Participation has not returned to normal since COVID.
- What interventions would you suggest?
  - Survey Residents
  - Survey Staff
  - Have a contest for best activity suggestion among staff.
  - Incorporate Outdoor as well as Indoor
  - Engage your Community

# Continuity of Care



# Connect to the state Health Information Exchange (HIE)

- Funding available now through Oklahoma legislation.
- \$30 million appropriated for connection costs.
- These funds are limited- when they are gone... their gone.
- Connection fee from Point Click Care and other LTC EHRs is covered.
- Based on average daily census



Join us at Tellers on December 3<sup>rd</sup> 3-6  
to address Continuity of Care- Quality Improvement



*Dawn Jelinek*  
*Senior Clinical Quality Consultant*

OFMQ- GWEP- OkDCN

Age-Friendly LTC and Clinical Practices

[djelinek@ofmq.com](mailto:djelinek@ofmq.com)

405-651-4796

